



▶ 订购标示法

ORDERING INDICATION KHC01 - D - 40 C R A W

KHC01	系列 Series	KHC01
D	作动方式 Acting type	D: 复动式 Double acting S: 单动式 Single acting
40	油缸内径 Hydraulic cylinder inside diameter	Φ 25 , Φ 32 , Φ 40 , Φ 50 , Φ 63
C	C : 油路板附调速	
R	压臂安装方向 Lever arm direction	R, L, C(标准型)
A	缸体一体成型	Cylinder body molding
W	W: 缸体上三方具有压臂安装座孔	

▶ 产品特性

此系列产品有五种可供选择的缸径：Φ 25, Φ 32, Φ 40, Φ 50, Φ 63。
 本产品使用了高性能的密封圈，避免了油缸的泄漏，且其寿命长。
 应用了杠杆原理，使工件容易夹紧，提高效率。
 缸体所用的材质是 45 钢，活塞材质是 45 钢，热处理，表面镀铬。
 缸体一体成型。

最大操作压力：70 kgf/cm²

最小操作压力：20 kgf/cm²

作动方式：复动式

▶ 注意事项

夹紧及放松作动速度需适当放缓。

▶ FEATURES

Five available bore diameter : Φ25,Φ32,Φ40,Φ50,Φ63.
 Use high-quality seal to avoid leakage and keep long operation
 Lever principle design is applied on this hydraulic cylinder. Clamping work piece easily and improve efficiency.
 The material of the cylinder body and the piston is 45# steel, heat treatment,chrome plated.

Max. operating pressure: 70 kgf/cm²

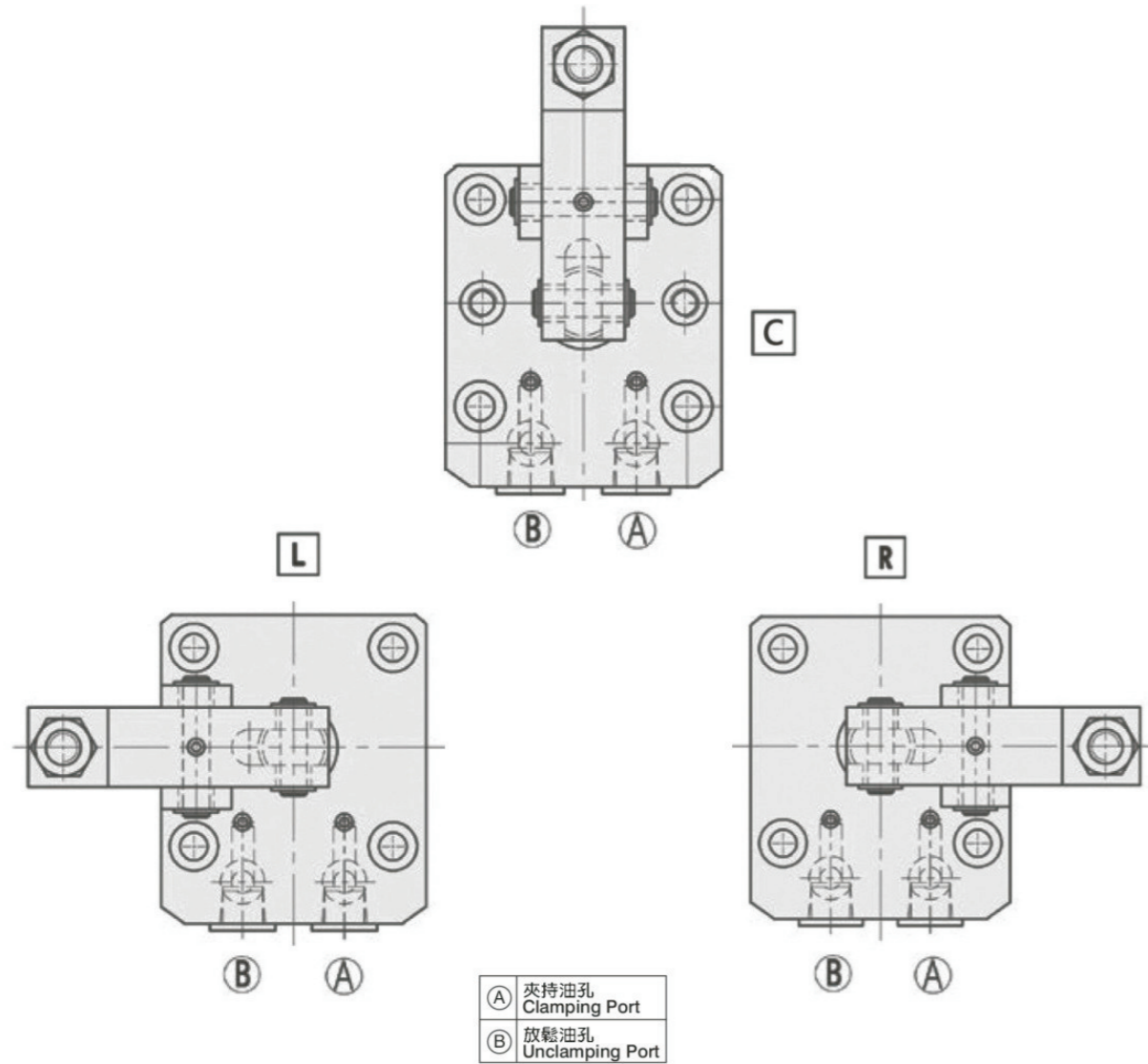
Min. operating pressure: 20 kgf/cm²

Double acting

▶ NOTE

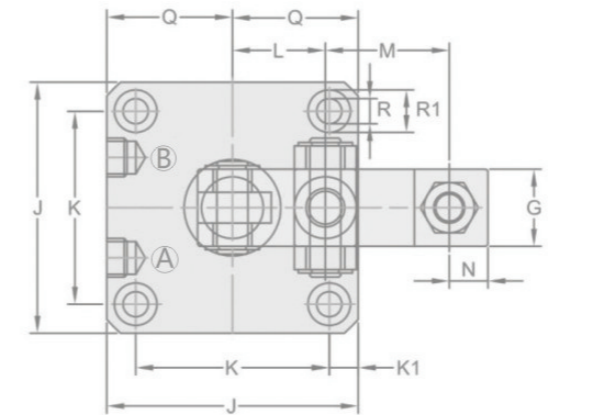
The acting speed of clamping-unclamping should be slowed down.

压板显示方向

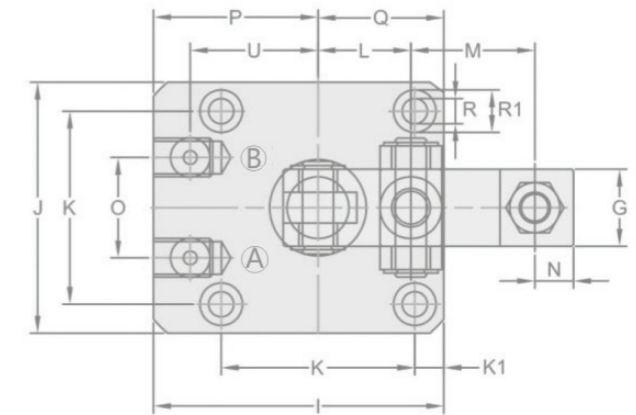


型号	理论夹持力 (70kgf/cm ²)	夹紧行程	总行程	拉入容积	推出容积	拉入受压面积	推出受压面积	使用温度范围
MODEL	CLAMPING FORCE AT 70 kgf/cm ² (kgf)	CLAMPING STROKE(mm)	TOTAL STROKE(mm)	OIL CAPACITY CLAMP(cm ³)	OIL CAPACITY UNCLAMP(cm ³)	EFF.PISTON AREA CLAMP(cm ²)	EFF.PISTON AREA UNCLAMP(cm ²)	RANGE OF TEMPERATURE (°C)
KHC01S-25	158	22	24	-	11.78	-	4.91	-10~+70°C
KHC01D-25	268	22	24	8.09	11.78	3.37	4.91	-10~+70°C
KHC01S-32	243	28	31	-	24.92	-	8.04	-10~+70°C
KHC01D-32	412	28	31	18.69	24.92	6.03	8.04	-10~+70°C
KHC01S-40	388	30	33	-	41.45	-	12.56	-10~+70°C
KHC01D-40	659	30	33	34.82	41.45	10.55	12.56	-10~+70°C
KHC01S-50	618	30	33	-	64.78	-	19.63	-10~+70°C
KHC01D-50	1049	30	33	54.42	64.78	16.49	19.63	-10~+70°C
KHC01S-63	980	30	33	-	102.83	-	31.16	-10~+70°C
KHC01D-63	1662	30	33	92.47	102.83	28.02	31.16	-10~+70°C

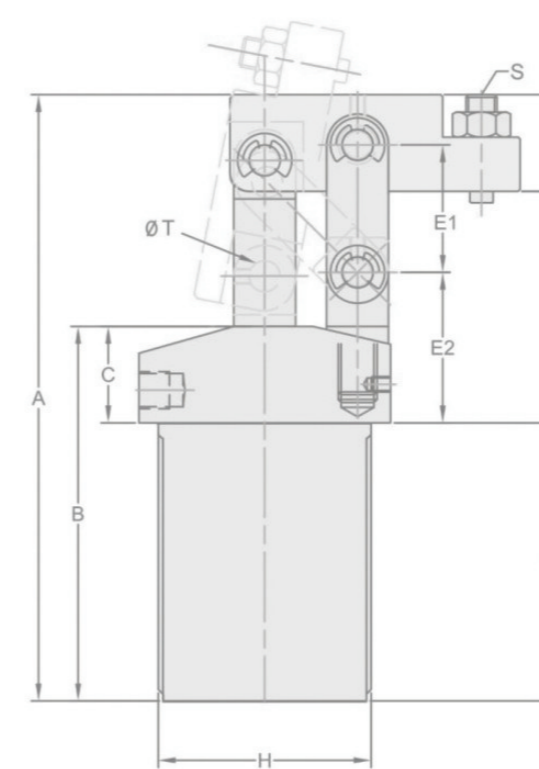
管接式 : Line Type



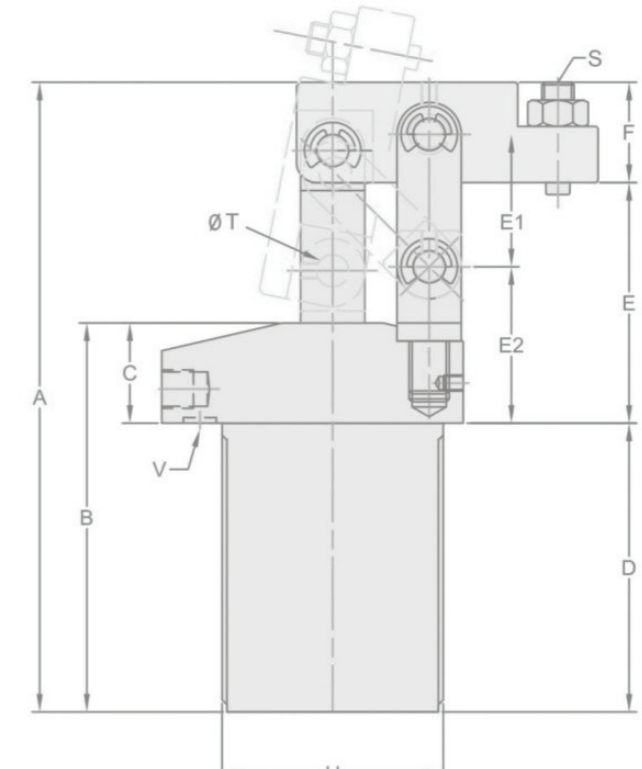
油路板式 : Manifold Type



- Ⓐ 夹持油孔 Clamping port
- Ⓑ 放鬆油孔 Unclamping port



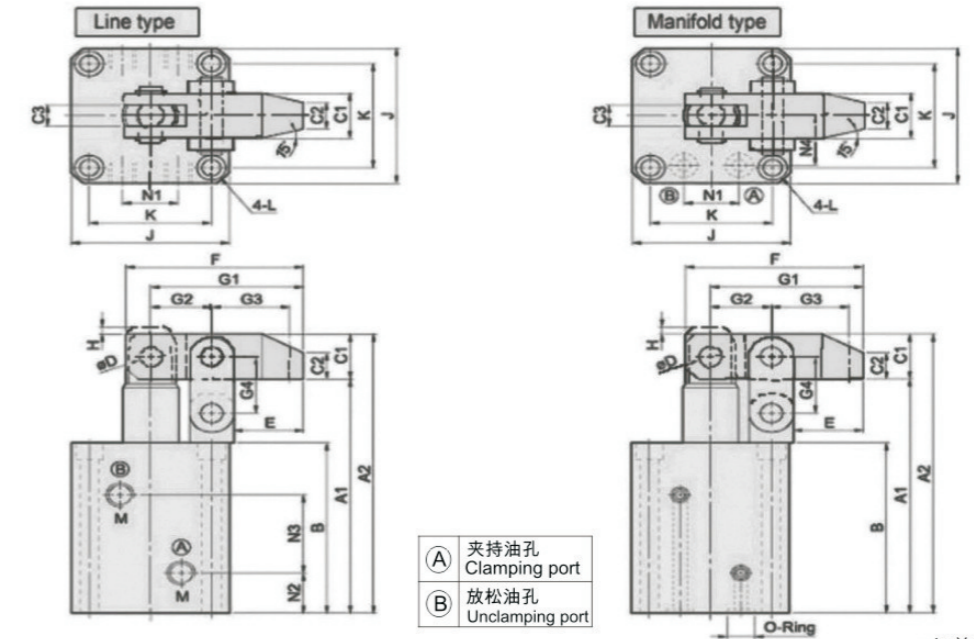
KHC01-Hydraulic 油压



KHC01-xxF 油压油路板式 Hydraulic with manifold

unit 单位: mm

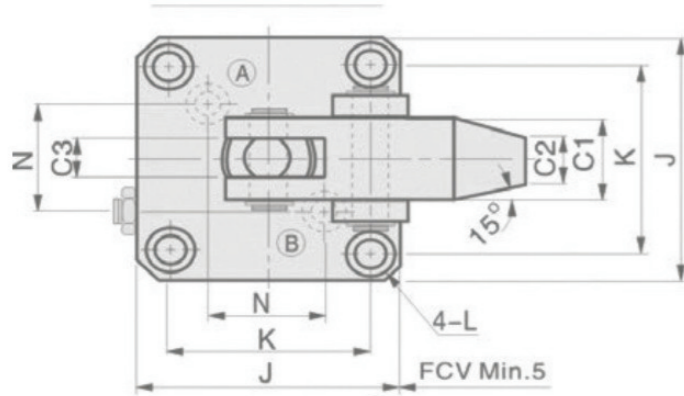
油接管式 Air line type	-	KHC01-32	KHC01-40	KHC01-50	KHC01-63
油压油路板式 Hydraulic manifold type	KHC01-25F	KHC01-32F	KHC01-40F	KHC01-50F	KHC01-63F
一般使用压力 normal pressure	油压20-70kg/cm ²				
缸体运行方式 acting type	复动 double acting				
夹紧行程 clamping stroke	22	28	30	30	30
活塞直径 bore dia.	φ25	φ32	φ40	φ50	φ63
活塞杆径 piston rod dia.	φ14	φ16	φ16	φ20	φ20
A	128.5	149.5	157.5	174	179
B	86.5	97.5	97.5	104	105
C	25	25	25	25	25
D	61.5	72.5	72.5	79	80
E	50	57	60	65	69
F	17	20	25	30	30
G	16	18	20	22	22
H	M40×1.5	M50×1.5	M55×1.5	M65×1.5	M80×1.5
I	60	70	75	88	108
J	50	60	65	75	90
K	37	45	50	58	70
L	18	22	24	27.5	32
M	23	30	32	36	42
N	7	8	10	14	14
O	23	23	26	32	35
P	35	40	42.5	50.5	63
Q	25	30	32.5	37.5	45
R	5.5	6.5	6.5	8.5	8.5
R1	9	11	11	14	14
K1	6.5	7.5	7.5	8.5	10
E1	26	33	33	44	48
E2	34.5	36	39	40	40
T	6	6	8	10	10
S	M6×1.0	M8×1.25	M8×1.25	M12×1.75	M12×1.75
A(夹紧clamp)	油压	G1/8	G1/8	G1/8	G1/8
B(放松unclamp)	油压	G1/8	G1/8	G1/8	G1/8
U	26	30.5	33	38	48
V(O-RING)	P7	P7	P7	P7	P7
Weight 重量 kg	0.6	1.0	1.2	2.1	2.4
	1.2	1.93	2.25	3.2	6.5



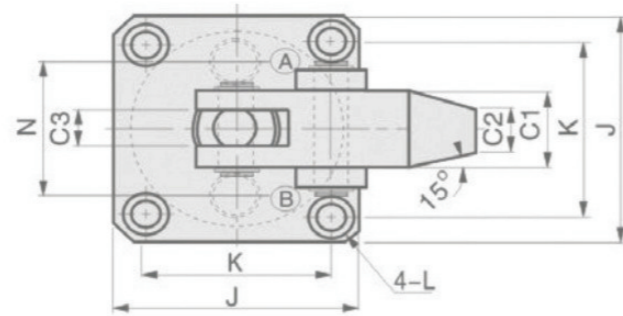
unit 单位: mm

规格型号 Type	管接式 Line Type 油路版型 O-ring Manifold	KHLC-25 KHLC-M25	KHLC-32 KHLC-M32	KHLC-40 KHLC-M40	KHLC-50 KHLC-M50	KHLC-63 KHLC-M63
油缸内径 bore of cylinder		φ25	φ32	φ40	φ50	φ63
活塞杆径 piston rod dia.		φ18	φ20	φ22.4	φ28	φ35
总行程 total stroke		25	25	30	34	40
受压面积 拉入/推出cm ²		2.37/4.91	4.9/8.04	8.63/12.57	13.47/19.63	21.56/31.17
理论夹力(30kg/cm ²) clamping force		116	190	288	453	701
使用流体 fluid		filtered hydraulic oil 已滤清之标准液压油				
最大操作压力 Max.pressure		70kg/cm ²				
使用压力范围 noraml pressure		5-50kg/cm ²				
作动方式 acting type		复动式 double acting				
A1		103	112	122	137	155
A2		122	131	144.2	162.4	186.8
B		76	85	90	100	111
C1		□19	□19	□22.2	□25.4	□31.8
C2		11	11	13	15	19
C3		9	9	10	11	15
φD		φ8	φ8	φ10	φ12	φ15
E		25	25	30	35.5	43
F		64	64	77	90	110
G1		55	55	66	77	94
G2		22	22	26	30	36
G3		28	28	34	39	48
G4		24	24	29	33	39
H		3	3	4	4	4
J		55	57	69	75	96
K		42	44	52	58	75
L		φ6.8-φ10.5×6.5D	φ6.8-φ10.5×6.5D	φ9-φ14×9D	φ9-φ14×9D	φ11-φ18×11D
M		PT1/8	PT1/8	PT1/4	PT1/4	PT1/4
N1		18	22	26	32	38
N2		17	19	19	21.5	22
N3		33	38	40	45	52
N4		20	22	26	30	38
油封o-ring		P7	P7	P8	P8	P9
weight 重量 kg		1.9	2.1	3.3	4.5	8.4

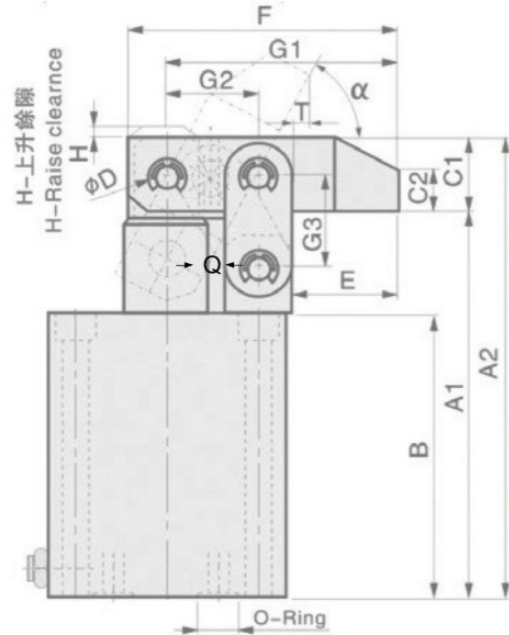
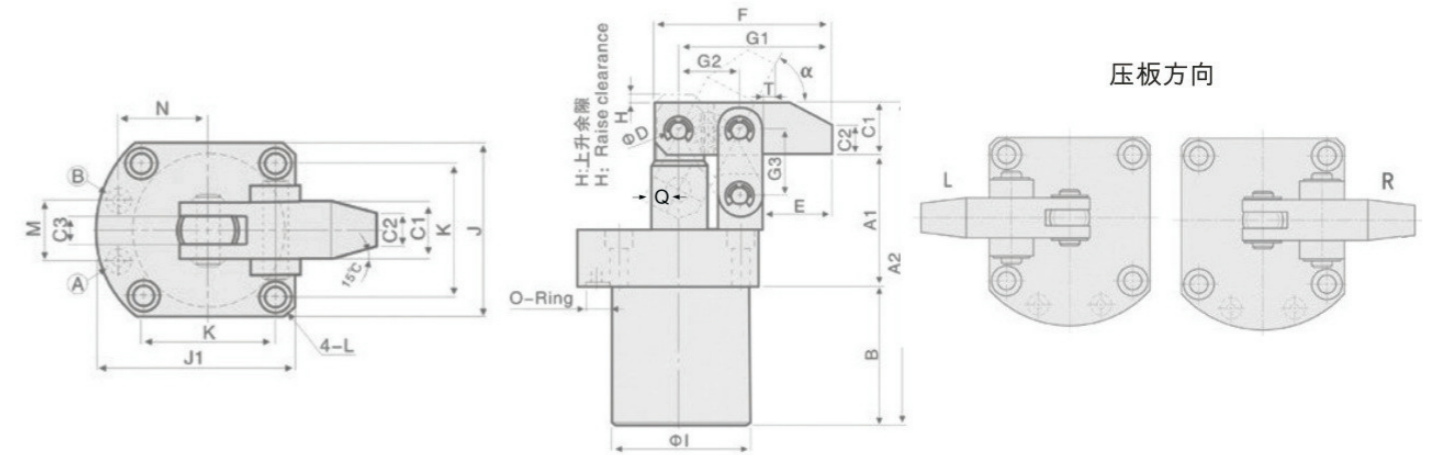
油路板附调速 KHLC-MF



法兰型 KHLC-FA

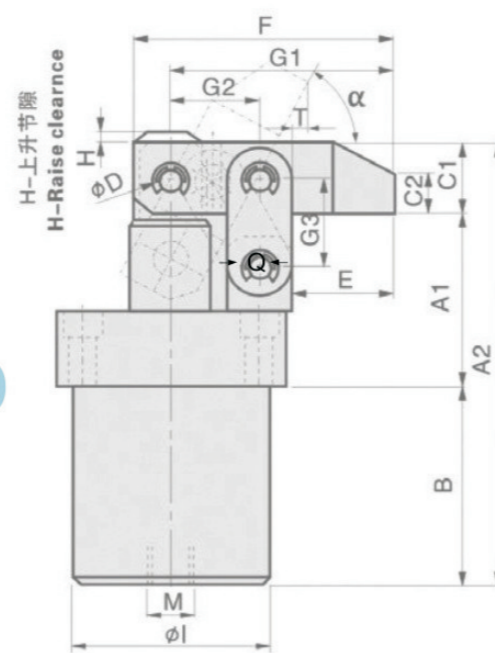


法兰型油路板 KHLC-FAM

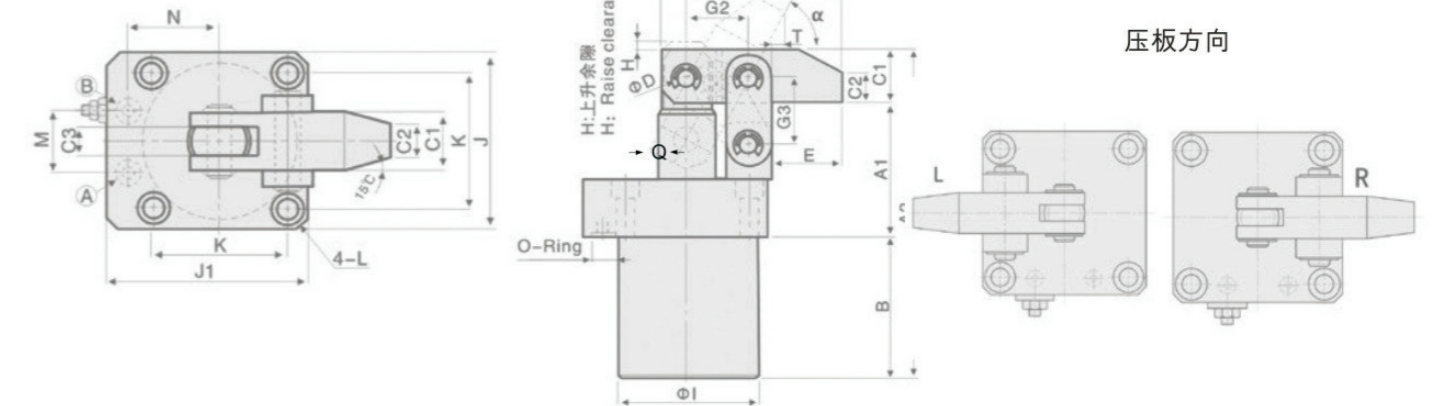


KHLC-MF

- (A) 夹持油孔
Clamping port
- (B) 放松油孔
Unclamping port



法兰型附调速 KHLC-FAMT



- (A) 夹持油孔
Clamping port
- (B) 放松油孔
Unclamping port

Unit:mm

MODEL	A1	A2	B	C1	C2	C3	ΦD	E	F	G1	G2	G3	H	ΦI	J	K	L	M	N	O-Ring	α	T	Q
KHLC-MF25	112	131	85	19	11	9	Φ8	25	64	55	22	24	3	-	55	42	Φ6.8-Φ10.5×6.5D	-	19	P7	61°	4	Φ18
KHLC-MF32	115	134	88	19	11	9	Φ8	25	64	55	22	24	3	-	57	44	Φ6.8-Φ10.5×6.5D	-	21	P7	52°	11	Φ20
KHLC-MF40	130	152	98	22	13	10	Φ10	30	77	66	26	29	4	-	69	52	Φ9-Φ14×9D	-	23	P9	58°	7.5	Φ22.4
KHLC-MF50	145	170	108	25	15	11	Φ12	35.5	90	77	30	33	4	-	75	58	Φ9-Φ14×9D	-	28	P9	61°	7.5	Φ28
KHLC-MF63	163	195	119	32	19	15	Φ15	43	110	94	36	39	4	-	96	75	Φ11-Φ18×11D	-	35	P9	66°	2	Φ35.5
KHLC-FA25	49	131	63	19	11	9	Φ8	25	64	55	22	24	3	Φ45	55	42	Φ6.8-Φ10.5×6.5D	PT1/4	25	-	61°	4	Φ18
KHLC-FA32	52	134	63	19	11	9	Φ8	25	64	55	22	24	3	Φ50	57	44	Φ6.8-Φ10.5×6.5D	PT1/4	32	-	61°	5	Φ20
KHLC-FA40	57	152	73	22	13	10	Φ10	30	77	66	26	29	4	Φ58	69	52	Φ9-Φ14×9D	PT1/4	40	-	61°	5.5	Φ22.4
KHLC-FA50	67	170	78	25	15	11	Φ12	35.5	90	77	30	33	4	Φ68	75	58	Φ9-Φ14×9D	PT1/4	50	-	61°	7.5	Φ28
KHLC-FA63	74	196	90	32	19	15	Φ15	43	110	94	36	39	4	Φ82	98	75	Φ11-Φ18×11D	PT1/4	63	-	66°	2	Φ35.5

Unit:mm

MODEL	A1	A2	B	C1	C2	C3	ΦD	E	F	G1	G2	G3	H	ΦI	J	J1	K	L	M	N	O-Ring	α	T	Q
KHLC-FAM25	49	122	54	19	11	9	Φ8	25	64	55	22	24	3	Φ45	55	64	42	Φ6.8-Φ10.5×6.5D	20	28	P6	61°	4	Φ18
KHLC-FAM32	52	131	60	19	11	9	Φ8	25	64	55	22	24	3	Φ50	57	65.5	44	Φ6.8-Φ10.5×6.5D	22	29	P6	61°	5	Φ20
KHLC-FAM40	57	144	65	22	13	10	Φ10	30	77	66	26	29	4	Φ58	69	79	52	Φ9-Φ13.5×9D	25	34.5	P9	61°	5.5	Φ22.4
KHLC-FAM50	67	162	70	25	15	11	Φ12	35.5	90	77	30	33	4	Φ68	75	87	58	Φ9-Φ13.5×9D	30	39	P9	61°	7.5	Φ28
KHLC-FAM63	74	187	81	32	19	15	Φ15	43	110	94	36	39	4	Φ82	98	114	75	Φ11-Φ18×11D	40	49.5	P9	66°	2	Φ35.5
KHLC-FAMT25	49	122	54	19	11	9	Φ8	25	64	55	22	24	3	Φ45	55	64	42	Φ6.8-Φ10.5×6.5D	20	28	P6	61°	4	Φ18
KHLC-FAMT32	52	131	60	19	11	9	Φ8	25	64	55	22	24	3	Φ50	57	65.5	44	Φ6.8-Φ10.5×6.5D	22	29	P6	61°	5	Φ20
KHLC-FAMT40	57	144	65	22	13	10	Φ10	30	77	66	26	29	4	Φ58	69	79	52	Φ9-Φ13.5×9D	26	34.5	P9	61°	5.5	Φ22.4
KHLC-FAMT50	67	162	70	25	15	11	Φ12	35.5	90	77	30	33	4	Φ68	75	87	58	Φ9-Φ13.5×9D	30	39	P9	61°	7.5	Φ28
KHLC-FAMT63	74	187	81	32	19	15	Φ15	43	110	94	36	39	4	Φ82	98	114	75	Φ11-Φ18×11D	40	49.5	P9	66°	2	Φ35.5